

For Determination of Vitamin A in Fish Oils and Blood Serum

ACTIVATED GDH
(Glycerol Dichlorhydrin)

VITAMIN A REAGENT

ACTIVATED GDH forms a color with Vitamin A which is stable for at least 8 minutes, permitting its absorption to be determined with ease.

The reagent is unaffected by traces of moisture and is non-corrosive. Requires no special precautions in handling.

Ref. SOBEL and WERBIN { J. Biol. Chem. 159, 681 (1945). Fed. Proc. 5, 155 (1946). Abstr. ACS Meeting, April 1946.

Manual describing use of reagent furnished with each bottle.

500 grams—\$9.50

Additional information gladly furnished on request

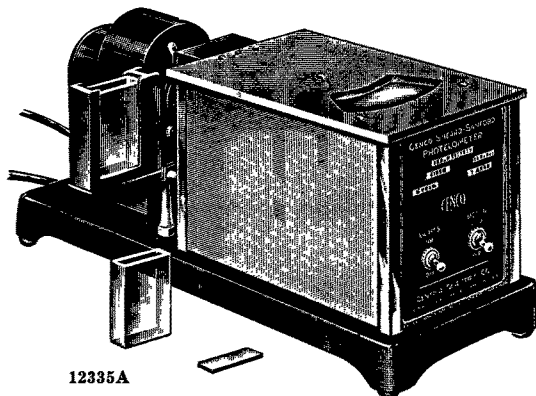
J. B. SHOHAN LABORATORIES

Research Products and Processes

78 Wheeler Point Road, Newark 5, N. J.

CENCO "PHOTELOMETER"

For Quick, Accurate Analysis of Molybdenum in Steel Metals in Food, Etc.



12335A

We will cooperate in applying the "Photometer" to any analytical procedure requiring speed and accuracy. Submit your problem to us.

Ask for Bulletin 104A

No. 12335A for 115 volts—60 cycles A.C. (Controlled frequency) Each..... **\$260.00**

CENTRAL SCIENTIFIC COMPANY

SCIENTIFIC INSTRUMENTS



LABORATORY APPARATUS

1700 IRVING PARK ROAD, CHICAGO 13, ILLINOIS

President Sorensen Announces Additional 1946-47 Committees

President S. O. Sorensen announces additional committee appointments for the coming year, as follows:

Literature Review

- M. M. Piskur, chairman, Swift and Company, Chicago, Ill.
- E. W. Blank, Colgate-Palmolive-Peet Company, Jersey City, N. J.
- J. B. Brown, Ohio State University, Columbus, Ohio
- W. H. Goss, Northern Regional Research Laboratory, Peoria, Ill.

Editorial Advisory Board

- J. T. R. Andrews, Procter and Gamble Company, Ivorydale, O.
- H. C. Black, Swift and Company, Chicago, Ill.
- J. B. Brown, Ohio State University, Columbus, O.
- E. B. Freyer, Spencer Kellogg and Sons inc., Buffalo, N. Y.
- Jacob Fitelson, Food and Drug Administration, New York City.
- W. B. Hendrey, Edwal Laboratories, Chicago, Ill.
- G. S. Jamieson, U. S. Department of Agriculture, Washington, D. C.
- H. E. Longenecker, University of Pittsburgh, Pittsburgh, Pa.
- K. S. Markley, Southern Regional Research Laboratory, New Orleans, La.
- A. W. Ralston, Armour and Company, Chicago, Ill.
- A. S. Richardson, Procter and Gamble Company, Ivorydale, O.
- Francis Scofield, National Paint, Varnish, and Lacquer Association, Washington, D. C.
- H. A. Schuette, University of Wisconsin, Madison, Wis.
- Daniel Swern, Eastern Regional Research Laboratory, Philadelphia, Pa.
- D. H. Wheeler, General Mills inc., Minneapolis, Minn.

Journal Abstract

- M. M. Piskur, chairman, Swift and Company, Chicago, Ill.
- Lenore Petchaft, Armour Soap Works, Chicago, Ill.
- Howard M. Teeter, Northern Regional Research Laboratory, Peoria, Ill.

Journal

- H. L. Roschen, chairman, Swift and Company, Chicago, Ill.
- A. E. Bailey, Girdler Corporation, Louisville, Ky.
- A. R. Baldwin, Corn Products Refining Company, Argo, Ill.
- E. R. Barrow, Barrow-Agee Laboratories, Inc., Memphis, Tenn.
- R. L. Edwards, Southwestern Laboratories, Dallas, Texas
- J. P. Harris, Industrial Chemical Sales, Chicago, Ill.
- T. C. Law, Law and Company, Atlanta, Ga.
- L. M. Tolman, Wilson and Company, Chicago, Ill.
- J. J. Vollertsen, Armour and Company, Chicago, Ill.

Membership

- Reid T. Milner, chairman, Northern Regional Research Laboratory, Peoria, Ill.
- S. W. Arenson, Doughnut Corporation of America, Ellicott City, Md.
- A. R. Baldwin, Corn Products Refining Company, Argo, Ill.
- Maison G. DeNavarre, 14934 Harper Avenue, Detroit, Mich.
- R. L. Edwards, Distillation Products, Inc., Rochester, N. Y.
- Ernest B. Kester, Western Regional Research Laboratory, Albany, Calif.
- W. Doss Lumpkin, Filtrol Corporation, Los Angeles, Calif.
- Rozier D. Oilar, 3505 Watson Road, Indianapolis, Ind.
- A. Cecil Wamble, Cottonseed Products Research Laboratory, College Station, Texas
- H. L. Roschen (ex-officio), Swift and Company, Chicago, Ill.

Nominating and Election

- R. R. King, chairman, Interstate Cotton Oil Refining Company, Sherman, Texas
- E. W. Colt, Armour and Company, Chicago, Ill.
- George A. Crapple, Wilson and Company, Chicago, Ill.
- T. H. Hopper, Southern Regional Research Laboratory, New Orleans, La.
- J. R. Mays, Jr., Barrow-Agee Laboratories, Inc., Memphis, Tenn.

Smalley Foundation

- J. J. Vollertsen, chairman, Armour and Company, Chicago, Ill.
- R. W. Bates, Armour and Company, Chicago, Ill.
- R. T. Doughtie, Jr., U.S.D.A., Memphis, Tenn.

A. S. Richardson, Procter and Gamble Company, Ivorydale, Ohio

Subcommittees

1. Oilseed Meal—J. J. Vollertsen, chairman, and R. W. Bates, vice chairman

R. R. Haire	T. C. Law
F. F. Hasbrouck	T. L. Rettger
L. H. Hodges	
2. Crude Vegetable Oils—A. S. Richardson, chairman

F. G. Dollear	R. T. Milner
---------------	--------------
3. Oilseeds—R. T. Doughtie, Jr., chairman

G. C. Henry	
-------------	--

Uniform Methods

- J. J. Vollertsen, chairman, Armour and Company, Chicago, Ill.
 J. T. R. Andrews, Procter and Gamble Company, Cincinnati, Ohio
 M. M. Durkee, A. E. Staley Manufacturing Company, Decatur, Ill.
 J. J. Ganucheau, Southern Cotton Oil Company, Gretna, La.
 T. H. Hopper, Southern Regional Research Laboratory, New Orleans, La.
 T. C. Law, Law and Company, Atlanta, Ga.
 L. B. Parsons, Lever Brothers Company, Cambridge, Mass.

Refining

- H. S. Mitchell, chairman, Swift and Company, Chicago, Ill.
 M. G. Boulware, Southern Cotton Oil Company, Memphis, Tenn.
 G. A. Crapple, Wilson and Company, Chicago, Ill.
 M. M. Durkee, A. E. Staley and Company, Decatur, Ill.
 R. H. Fash, Fort Worth Laboratories, Fort Worth, Texas
 E. B. Freyer, Spencer Kellogg and Sons, Inc., Buffalo, N. Y.
 E. M. James, Lever Brothers Company, Cambridge, Mass.
 A. Kiess, Armour and Company, Chicago, Ill.
 R. R. King, Interstate Cotton Oil Refining Company, Sherman, Texas
 N. F. Kruse, Central Soya, Inc., Decatur, Ind.

- T. C. Law, Law and Company, Atlanta, Ga.
 H. E. Moore, Capital City Products Company, Columbus, Ohio
 J. R. Mays, Jr., Barrow-Agee Laboratories, Inc., Memphis, Tenn.
 J. H. Sanders, Procter and Gamble Company, Ivorydale, Ohio
 L. A. Spielman, Durkee Famous Foods, Chicago, Ill.
 R. T. Milner, Northern Regional Research Laboratory, Peoria, Ill.
 S. O. Sorensen, Archer-Daniels-Midland Company, Minneapolis, Minn.

Subcommittees

1. Glass Kettle Refining—S. O. Sorensen, chairman

E. M. James	R. T. Milner
N. F. Kruse	H. S. Mitchell
2. Centrifugal Refining of Extracted Soybean Oil—E. M. James, chairman

A. U. Ayres	J. H. Sanders
H. E. Moore	J. B. Tuttle
3. Modified Cup Refining of Extracted Soybean Oil—J. H. Sanders, chairman

E. R. Barrow	E. B. Freyer
--------------	--------------

Seed and Meal Analysis

Subcommittees

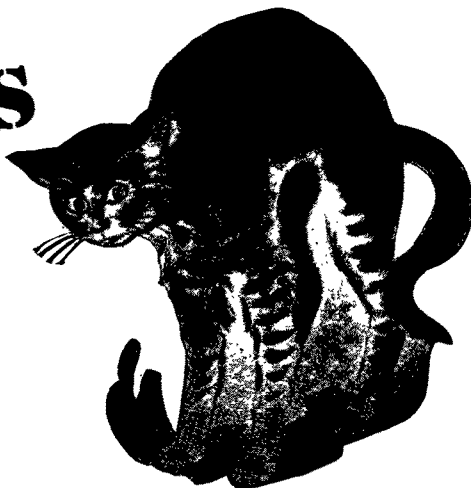
1. Cottonseed and Cottonseed Meal—T. L. Rettger, chairman

M. G. Boulware	R. R. Haire
C. P. Brenner	R. C. Pope
C. H. Cox	O. E. Wilkins
W. A. Fix	
2. Peanuts and Peanut Meal—T. C. Law, chairman

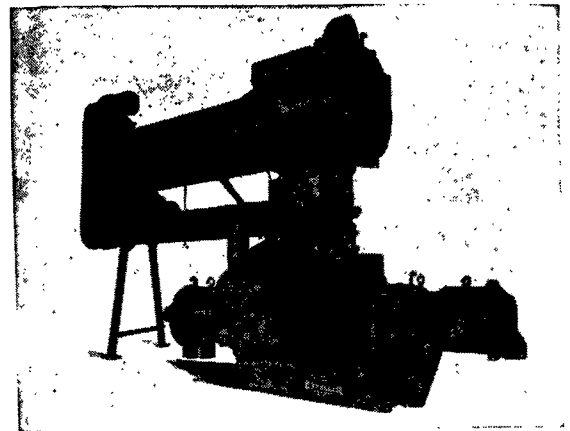
G. Conner Henry, vice chairman	
E. C. Ainslie	T. J. Potts
C. H. Cox	
3. Tung Fruit and Meal—R. S. McKinney, chairman

G. Worthen Agee	N. E. Katz
G. Conner Henry	Frank C. Pack

For whichever way the
CAT
JUMPS



● "No one knows which way the cat will jump"—that means no one knows what material you will find it profitable to press from year to year. Whatever happens, you are prepared when you operate with Anderson Twin-Motor Duplex Expellers, for they give lower costs on cottonseed, peanuts or soybeans.



DUPLEX SUPER DUO OIL EXPELLER

Will you have the facilities and labor to handle the increased crops in the years ahead? Will you be able to press soybeans if they are offered? Don't let inadequate equipment hold you back or limit you to one crop. Remember, that two men can handle a battery of these Duplex Expellers and profitably press cottonseed, soybeans and peanuts. Send today for detailed information.

THE V. D. ANDERSON CO.
 1935 West 96th Street • Cleveland 2, Ohio